



# *NS Range*

*Textile Printing Division*

# NS Range

## RANGE INTRODUCTION

Asutex's non-dry range is composed of three products:

- **Asublanc E-NS New/E**
- **Asulak E-NS New/E**
- **Asuprint E-NS New/E**

These **water based** and "ready to use" products have been created to print on garments with **great resistance to the drying on screens**.

They are completely compatible between themselves and the Asuprint pigments range and it is possible to mix them in any proportion.

These **eco-friendly products** are PVC, APEO, phthalates, solvents, metals and formaldehyde free. **Their ecological formulations allow passing the most restrictive textile regulations.**

Scope and characteristics:

- Application over different kind of fabrics (cotton and its blends, polyamide, elastene).
- It allows printing on conventional and automatic (carrousel) serigraphy systems, being able to use an intermediate infrared drier without blocking the screens.
- Outstanding elasticity.
- Great washing fastness.
- Soft handle.
- Good hiding power and colour performance.
- Good dry washing fastness.
- Good wet and dry crock/rubbing fastness.
- Poor stickiness.

## APPLYING THE PRODUCTS

Use these advices for a correct and successful application:

- The screen must be for water based pastes, with reticulated photoemulsion (it is not possible to use the plastisol moulds).
- Squeegee in V-shaped, semi soft.
- For high occupation designs is advisable to make two printing passages with I.R. intermediate drying.
- For sharp outlines, it is possible to print wet on wet.
- It is recommended, from time to time, to add fresh paste in order to keep constant moisture.
- When stop printing it is recommended to leave the screen with paste. To print again, the screen opens spraying water or adding fresh paste.
- To obtain very good coverage with Asublanc and Asulak E-NS NEW/E use a 43 mesh and print twice.

## FORMALDEHYDE VALUES AGAINST OTHER COMPETITORS

The analysis of formaldehyde was done using the **OEKO-TEX** proposed method (**Japanese Law 112**). The formaldehyde values can oscillate depending on the amount of paste that has been deposited on the fabric and the time and temperature while curing. With Asutex's NS Range you will forget about any issue related with formaldehyde.

The values shown below were obtained under the following printing conditions:

- Double printing with intermediate drying (cotton fabric).
- Dried and cured 3 min @ 150°C.

- **Rubber White**

Competitor A	24 ppm
Competitor B	19 ppm
Competitor C	25 ppm
<b>Asublanc E-NS New/E (Asutex)</b>	<b>0 ppm</b>

- **Rubber Base**

Competitor A	8 ppm
Competitor B	11 ppm
Competitor C	12 ppm
<b>Asulak E-NS New/E (Asutex)</b>	<b>0 ppm</b>

- **Transparent**

Competitor A	14 ppm
Competitor B	12 ppm
Competitor C	8 ppm
<b>Asuprint E-NS New/E (Asutex)</b>	<b>0 ppm</b>

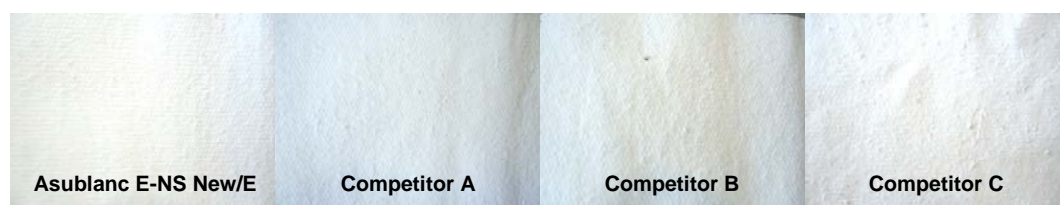
## GENERAL PROPERTIES AGAINST OTHER COMPETITORS

The most usual properties of the products were evaluated against their competitors. A short brief, along with some pictures and diagrams, describes the differences among them.

Note: The pictures can not reflect the reality at 100%.

- **Rubber White**

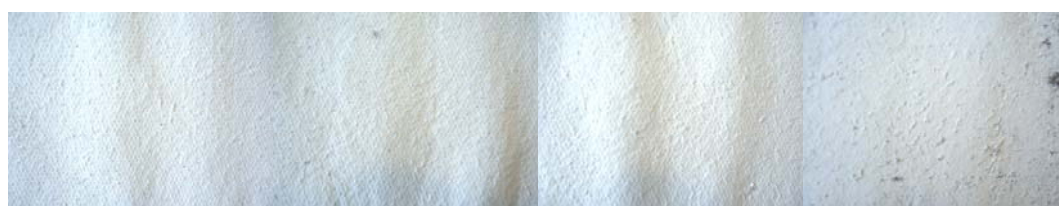
The covering and the brightness are similar in these products. A better grade of white is observed in Asublanc E-NS New/E against competitors A and B and it is quite similar to competitor C. Elasticity and washing fastness are very similar except for competitor's C non dry. Stickiness is better for Asublanc E-NS New/E.



*Original printed fabrics*



*Washing fastness at 40°C - 6 times*



*Washing fastness at 40°C - 12 times*





Washing fastness at 60°C - 6 times



Washing fastness at 60°C - 12 times



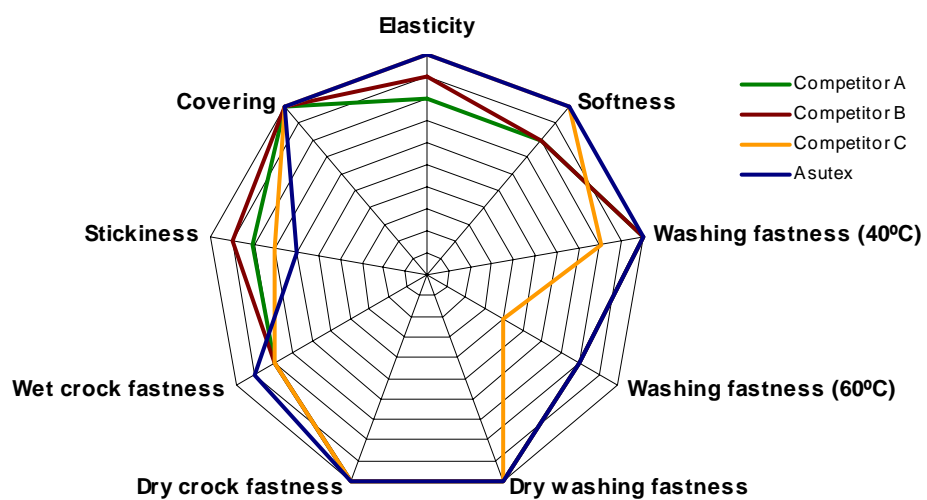
Elasticity after washing 12 times @ 60°C



Dry crock fastness

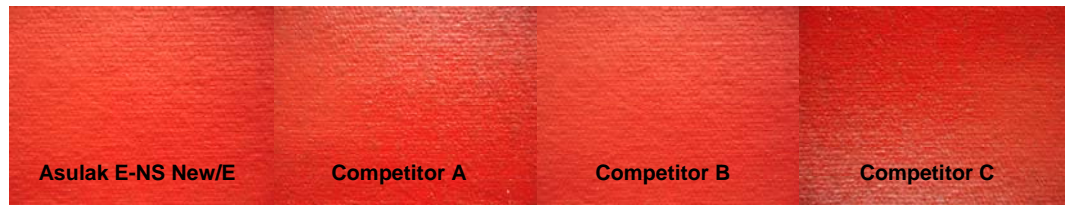


Wet crock fastness



- **Rubber Base**

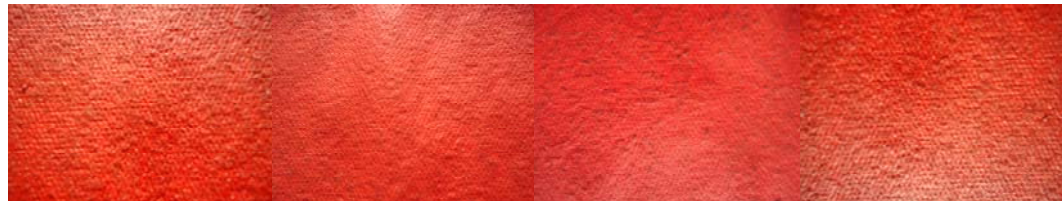
Asulak E-NS New/E is shinier than all their competitors. Their covering is equivalent. Elasticity, washing fastness and crock fastness are also similar.



*Original printed fabrics*



*Washing fastness at 40°C – 6 times*



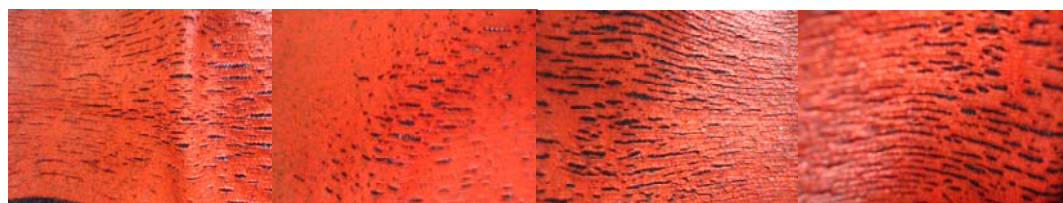
*Washing fastness at 40°C – 12 times*



*Washing fastness at 60°C – 6 times*



*Washing fastness at 60°C – 12 times*

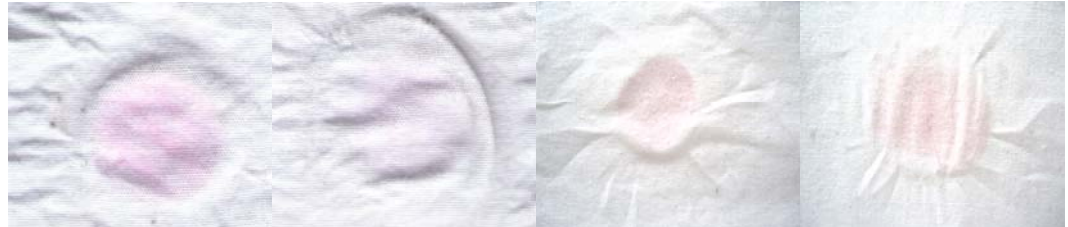


*Elasticity after washing 12 times @ 60°C*

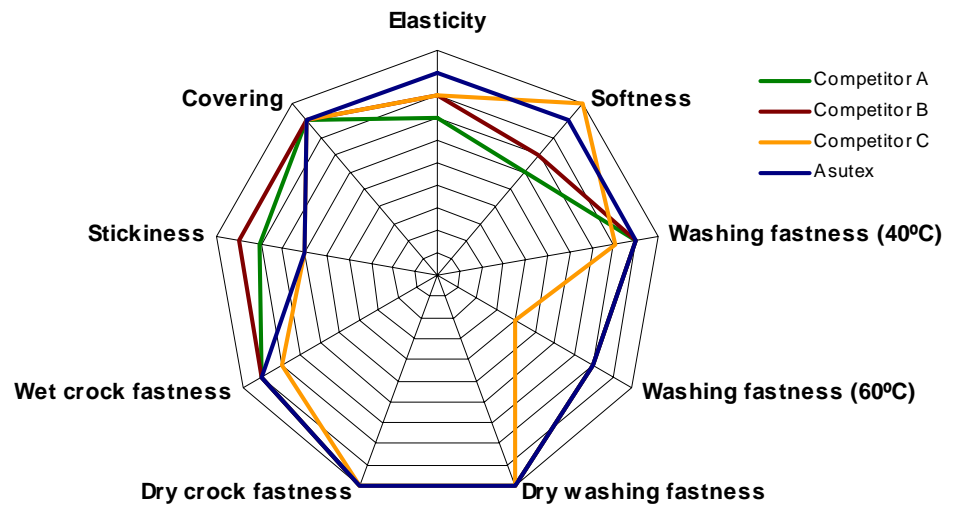




*Dry crock fastness*

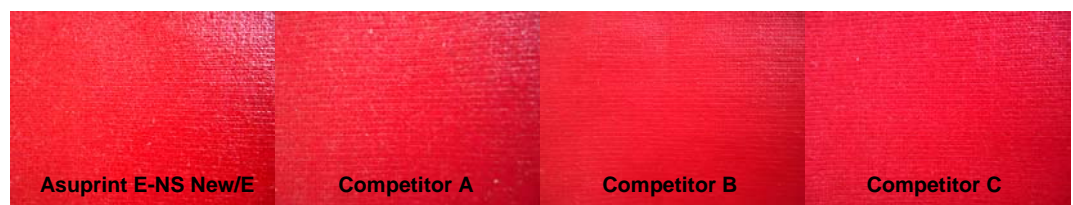


*Wet crock fastness*

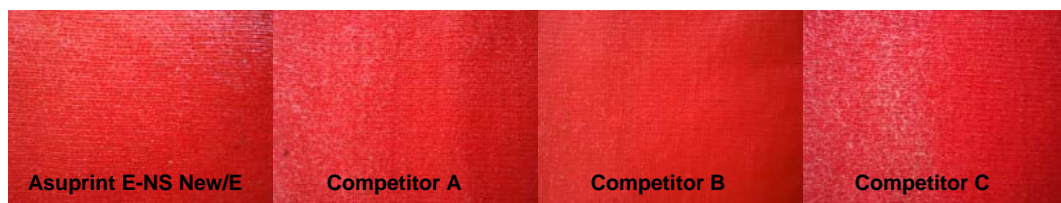


#### • Transparent

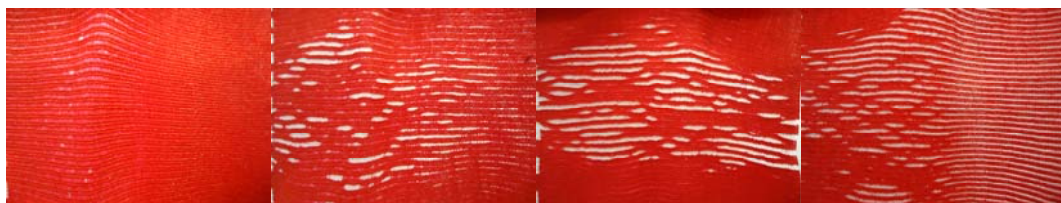
Asuprint E-NS New/E is much more elastic than the other competitors. Asuprint E-NS New/E has got a better washing fastness and crock fastness and has got a lower stickiness. There is a big gap between Asuprint E-NS New/E and the other competitors due to its great superiority.



*Original printed fabrics*



*Washing fastness at 40°C – 6 times*



*Elasticity after washing 6 times @ 40°C*



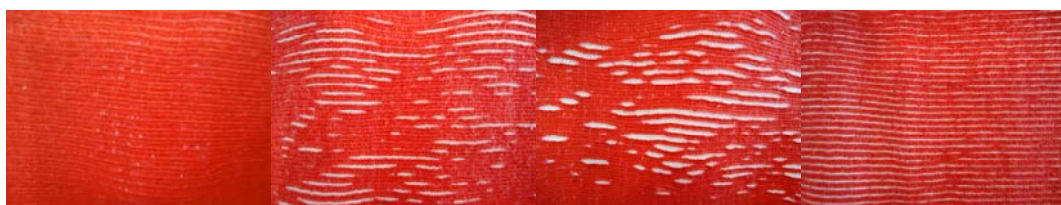
*Washing fastness at 40°C – 12 times*



*Elasticity after washing 12 times @ 40°C*



*Washing fastness at 60°C – 6 times*

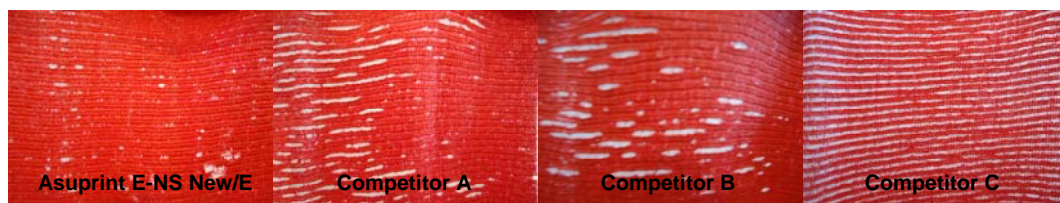


*Elasticity after washing 6 times @ 60°C*

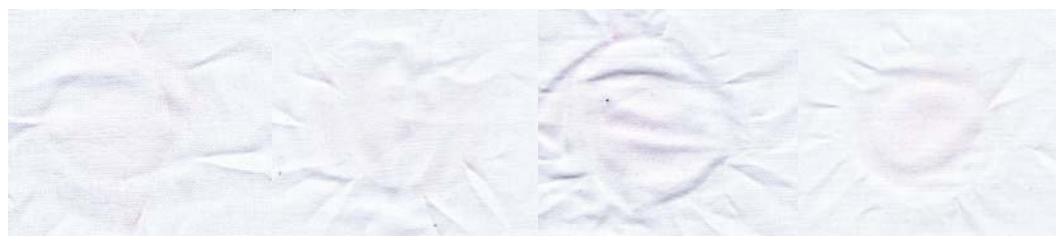


*Washing fastness at 60°C – 12 times*

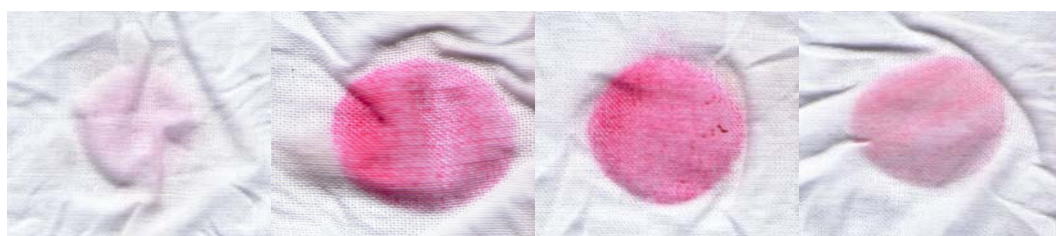




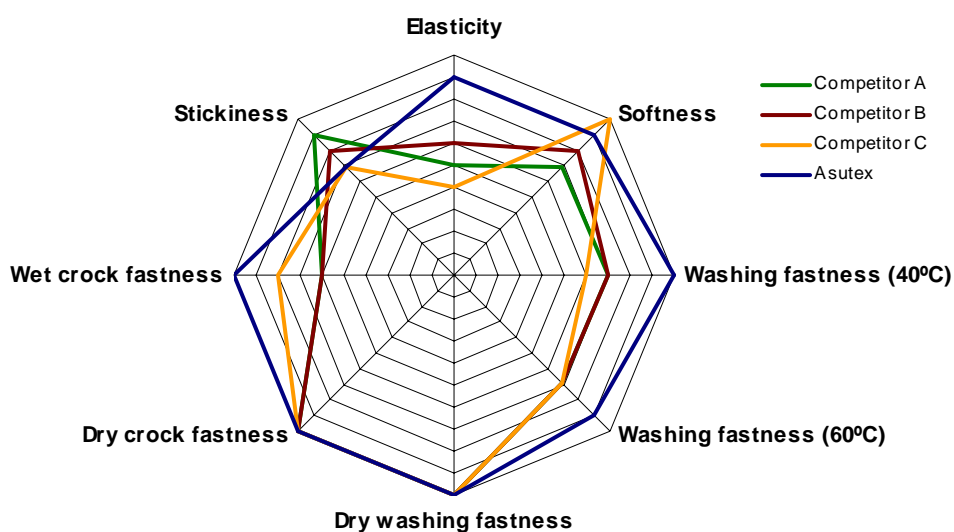
Elasticity after washing 12 times @ 60°C



Dry crack fastness



Wet crack fastness



#### TIPS FOR A GOOD COLOUR PERFORMANCE

**Asulak E-NS New/E** has got a great colour performance, so deep colours are obtained when using it. To obtain brighter shades we suggest mixing Asulak E-NS New/E with a **5-10% of Asublanc E-NS New/E**.

In the special case of **printing a yellow** we recommend using **Asublanc E-NS New/E** instead of the rubber base because its hiding power is excellent (rubber base is not covering enough).



THE INDICATIONS GIVEN HEREIN CORRESPOND TO PRACTICAL EXPERIENCES. OWING TO THE DIFFERENCES IN LOCAL CONDITIONS THEY CANNOT CLAIM TO BE COMPLETE, SO THAT ANY LIABILITIES – ALSO WITH A VIEW TO CLAIMS OF THIRD PARTIES – ARE EXCLUDED.



APLICACIÓN Y SUMINISTROS TEXTILES, S.A.

Av. Camí Reial, 13-15  
08184 Palau-solità i Plegamans  
BARCELONA (SPAIN)  
Telephone: 34 93 864 71 11 – Fax: 34 93 864 51 04  
e-mail: [chemicals@asutex.es](mailto:chemicals@asutex.es)  
Website: [www.asutex.es](http://www.asutex.es)

